

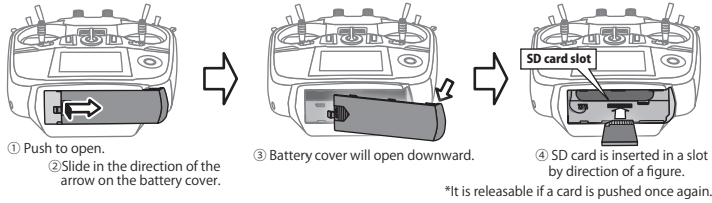
# T14SG / FX-22 SOFTWARE UPDATE MANUAL

## [Updating procedure]

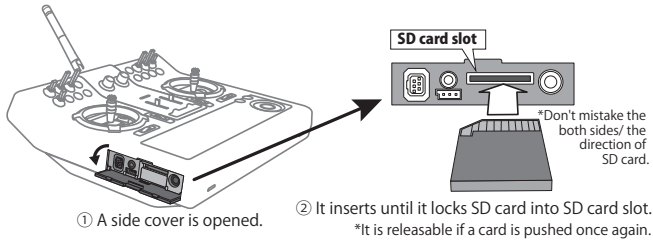
### 1. SD card format

1. You will first want to format your SD card to the 14SG/FX-22. If you are using an existing SD card, any data previously saved to it will be deleted during the "format". We suggest you either save this data on your computer or purchase a new card.

#### T14SG:



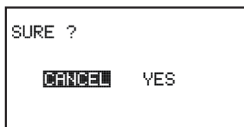
#### FX-22:



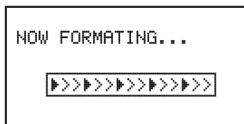
2. After inserting the new SD card into the transmitter, turn on the power switch. You will see the word "FORMAT" if you have not previously used this card in the transmitter.



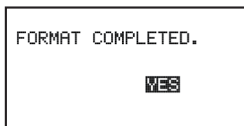
3. Please select "YES" and touch "RTN".



4. The following screen is displayed during formatting.



5. When the format is completed, the following screen is displayed.



6. Turn off the power switch and remove the SD card from its slot.

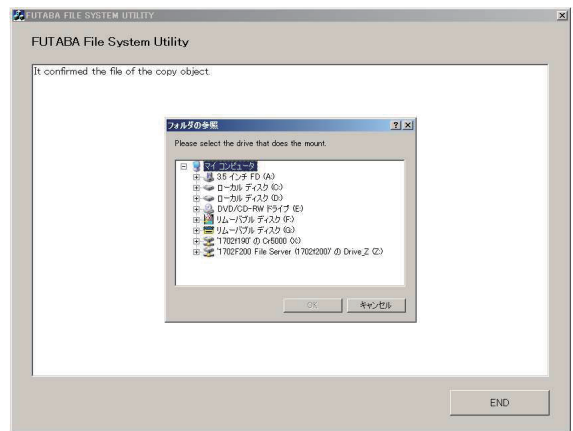
## 2. Preparing the software update card.

1. Please unzip the zipped file. The following files will be created.

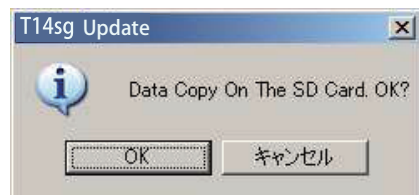
- T14sgUpdate.exe
- T14sgUpdate.dat
- T14SG\_UPDATE.dat
- T14SG\_TS.bin
- T14SG\_AP.bin
- T14SG\_UPLD.bin

2. Insert the "formatted" SD card into a card reader in your PC.

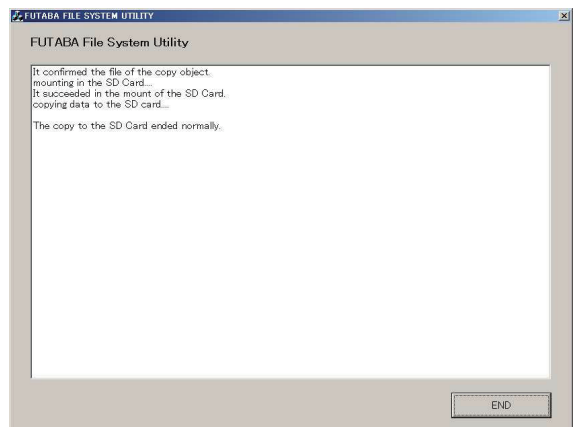
3. Please run "T14sgUpdate.exe".



4. Select the drive that your card reader is assigned to in your PC.



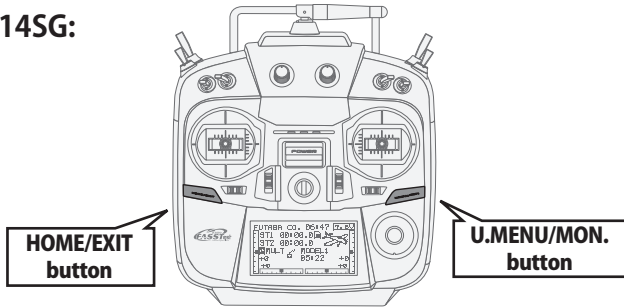
5. After the Update files are copied to the SD card, the following screens are displayed. Click the "End" button.



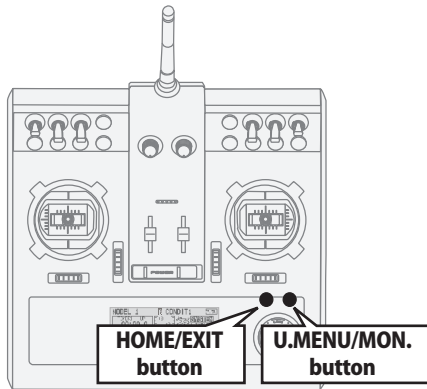
### 3. Update software of T14SG/FX-22

1. Please insert the SD card which includes the update file.
2. Push the HOME/EXIT button.
3. While still holding the HOME/EXIT button, power on the transmitter.

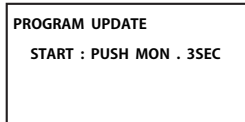
T14SG:



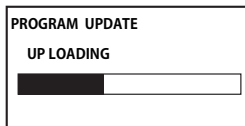
FX-22:



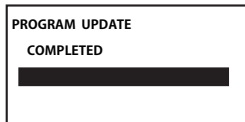
4. After a few seconds, the following screen is displayed.



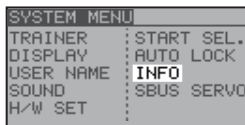
5. Push the U.MENU/MON. button for three seconds. The software update will begin.



6. When the update is complete, the following screen is displayed. Turn off the power switch.



7. Remove the SD card.



8. Please check the software version at INFO in SYSTEM menu.



# T14SG/FX-22 Installing Speech Data Ver.2

Before installing the speech data, you will need to update your T14SG/FX-22 software to Version 2.0 or later.

If the software version of T14SG /FX-22 is before Ver.2.0, the speech data can not be installed.

Ver.4.x software of T14SG/FX-22 is not able to play the Ver.1 sound data. After updating to Ver.4.x , please install the Ver.2 sound data to T14SG/FX-22.

There are three language versions, English, German, and Japanese, in speech data. It is possible to install only one language. If you install a second language, it will override the first one that you installed.

## [Installing procedure]

### 1. Making of card for installing speech data

1. Please unzip the zipped file. The following files will be created.

#### English Version

- T14sgInstallSoundEng.exe
- T14sgUpdate.dat
- T14SG\_INSTALL\_SOUND.dat
- T14sgSpeechEng1.bin
- T14sgSpeechEng2.bin
- T14sgSpeechEng3.bin

#### German Version

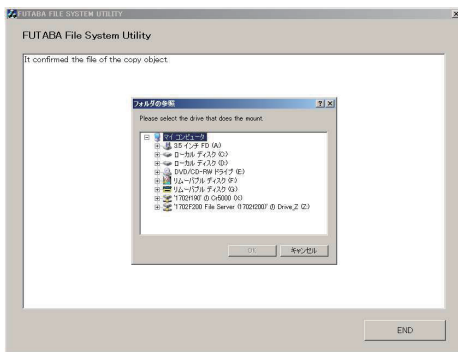
- T14sgInstallSoundEng.exe
- T14sgUpdate.dat
- T14SG\_INSTALL\_SOUND.dat
- T14sgSpeechGer1.bin
- T14sgSpeechGer2.bin
- T14sgSpeechGer3.bin

#### Japanese Version

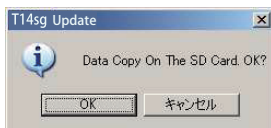
- T14sgInstallSoundEng.exe
- T14sgUpdate.dat
- T14SG\_INSTALL\_SOUND.dat
- T14sgSpeechJpn1.bin
- T14sgSpeechJpn2.bin
- T14sgSpeechJpn3.bin

2. Install the already formatted SD card into your PC's card reader.

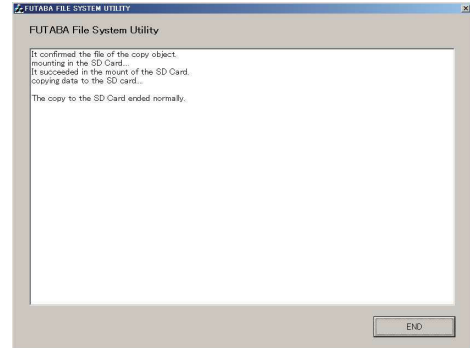
3. Please run "T14sgInstallSound\*\*\*.exe".



4. Select the drive that your card reader is assigned to in your PC. Click "OK".



5. After the Update files are copied to the SD card, the following screens are displayed. Click the "End" button.



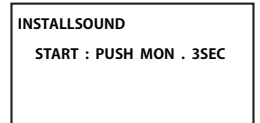
### 2. Install speech data of T14SG/FX-22

1. Please insert the SD card which includes the installing speech data.

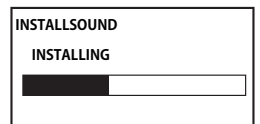
2. Push the HOME/EXIT button.

3. Still holding the HOME/EXIT button, power on the transmitter.

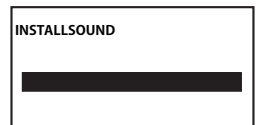
4. After a few seconds, the following screen is displayed.



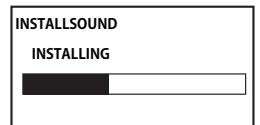
5. Press the U.MENU/MON. button for three seconds. The speech data begins to install.



6. After about 16 seconds, uploading reaches the right of the progress bar, and then begins again after a pause.



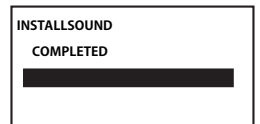
7. The uploading may appear to progress slowly.



8. The progress bar will again upload. This can take a few minutes.(About. 2 min.)

And, "COMPLETED" is displayed.

**(Don't turn off the power before COMPLETED is displayed.)**



9. Please detach SD card.

10. Please check the language at TELEM.SET. menu in LINKAGE menu.

# T14SG/FX-22 Software Update Changes (Version 6.x)

This software update modifies features found on the 14SG/FX-22. If you have questions about these updated directions, please consult your instruction manual or futaba-rc.com for further details. Refer to the original manual where applicable but replace the steps indicated below with these instructions.

## 1. [All Model Types] LANGUAGE Change

T14SG/FX-22 had 9 languages before.



That was concentrated in 3 languages. (Refer to a Language table)

INFO	
PRODUCT	120900605
RF ID	123300110
LANGUAGE	ENGLISH
VERSION	6.0
AREA	AMERICA
CARD SIZE	568/3810

\*Telemetry speech is in English or Japanese.

\*Telemetry speech is answering to after Ver 2.

\*The telemetry speech and the version of installed speech data can be confirmed on the "TELEM.SET." screen.

\*After a up dated, there is a possibility that a language changes. Readjust a language in that case.

### Language table Choose from these files.

Version No.	(no suffix)	Selectable language		
Ver.6.0		English	Japanese	German
Ver.6.0A		English	Dutch	French
Ver.6.0B		English	Spanish	Czech
Ver.6.0C		English	Russian	Italian

## 2. [Glider: Normal Wing Normal Tail] Trim Mix

The "RUD" is added to trim mix function.

MODEL TYPE		WING TYPE:	
TYPE	GLIDER	2AIL, 2AIL+1FLP,	
WING	NORMAL	2AIL+2FLP, 2AIL+4FLP,	
TAIL	NORMAL	4AIL+2FLP	
		TAIL TYPE:	
		NORM	

TRIM MIX	NORMAL	1/2	TRIM MIX	NORMAL	2/2
AIL	AIL2	INH	ACT	INH	SPEED
+0	+0				AIL 0
FLAP	FLP2		COND. DELAY	0	FLAP 0
+0	+0		CUT-SW	--	ELE 0
ELE	+0	+0 RUD	AUTO-SW	--	RUD 0

Setting range : -250% ~ +250%

"RUD" is added

Setting range : 0 ~ 27

## 3. [S-FHSS] Fail-safe function

When fail-safe setting makes the battery fail-safe "ON" at "HOLD" in S-FHSS, fail-safe setting will be "F/S".

But even if the battery fail-safe are changed to "OFF", fail-safe setting doesn't change with a condition of "F/S".

\*It was corrected that before was "HOLD" display (Actual condition is F/S).

FAIL SAFE				1/4
	F/S	B.F/S	POS	
1	AIL	HOLD	OFF	
2	ELE	HOLD	OFF	
3	THR	F/S	ON	+100%
4	RUD	HOLD	OFF	

When the battery fail-safe (B.F/S) are made "ON", fail-safe (F/S) setting will be "F/S".

### Combination Table

	F/S	B.F/S
	HOLD	OFF
	F/S	OFF
	F/S	ON

\*F/S setting is HOLD, and the combination by which B/F/S setting is on is not.

## 4. [All Model Types] SBS-01RB function

Compatible with the brushless motor sensor SBS-01RB. The name was changed to **SBS-01R\*** from **SBS-01RMO**.

SENSOR	
2	SBS-01R* ID 00000
INHIBIT	SPEED-1677
SBS-01T	
SBS-01R*	
TEMP125	

Magnetic RPM sensor 『SBS-01RO』  
Optical RPM sensor 『SBS-01RM』  
Brushless motor sensor 『SBS-01RB』

→ The **SBS-01R\*** is selectable.

SBS-01RM (magnetic sensor)	RPM	2/2
↓ALERT	INH	
↓THRESHOLD		0rpm
↓Vibes	OFF	
SPEECH	INH	--
MAGNETIC	GEAR	1.00

Gear ratio  
Setting range : 1.00 ~ 99.00

SBS-01RO (optical sensor)	RPM	2/2
↓ALERT	INH	
↓THRESHOLD		0rpm
↓Vibes	OFF	
SPEECH	INH	--
OPTICAL	FIN	2

Number of blades (Propeller).

SBS-01RB (brushless motor sensor)	RPM	2/2
↓ALERT	INH	
↓THRESHOLD		0rpm
↓Vibes	OFF	
SPEECH	INH	--
BLS MOTOR	POLE	4

Number of poles (Brushless motor).

## 5. [All Model Types] SBS-01S function

Compatible with the SBS-01S. The SBS-01S can monitor and display the in-flight current, operating angle, and internal temperature of up to two S.BUS2 servos. This sensor uses 6 slots. Please read the SBS-01S sensor instruction manual for more information.

Start Slot 1, 2, 8, 9, 10, 16, 17, 18, 24, 25, 26

SENSOR		1/3
16	INHIBIT ID 00000	
INHIBIT	SBS-01A	
SBS-01T	SBS-01G	
SBS-01V	SBS-01S	
SBS-01R*	TEMP125	

The **SBS-01S** is selectable.

CURR. #1	1/2
<MIN/MAX>	
↑ALERT	INH
↑THRESHOLD	10.0A
↑Vibes	OFF

[Setting range] ↓ THRESHOLD ~ 10.0A

CURR. #1	2/2
↓ALERT	INH
↓THRESHOLD	0.0A
↓Vibes	OFF
SPEECH	INH

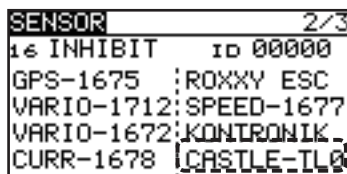
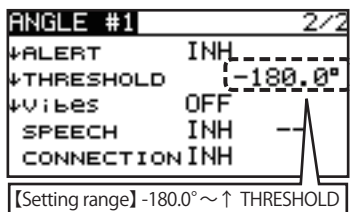
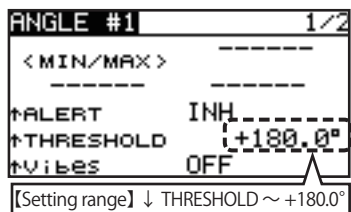
[Setting range] 0.0A ~ ↑ THRESHOLD

TEMP. #1	1/2
<MIN/MAX>	
↑ALERT	INH
↑THRESHOLD	+115°C
↑Vibes	OFF

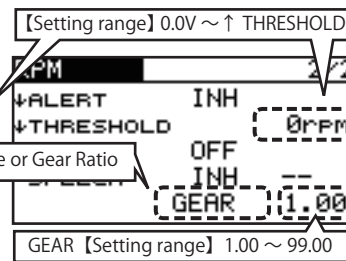
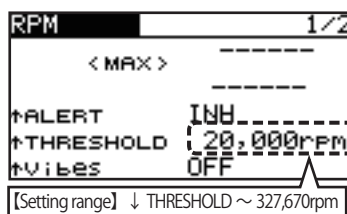
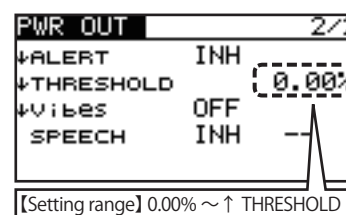
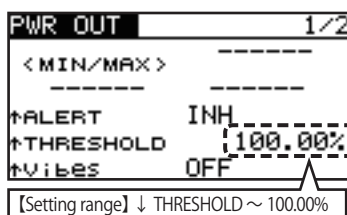
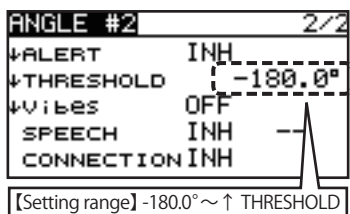
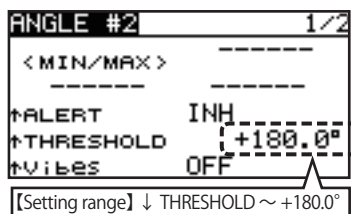
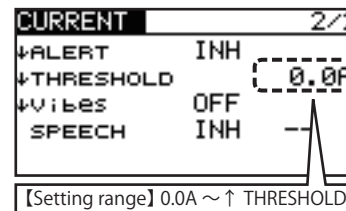
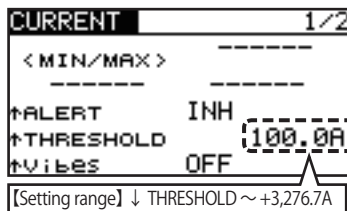
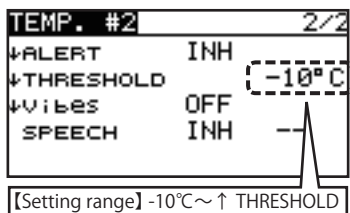
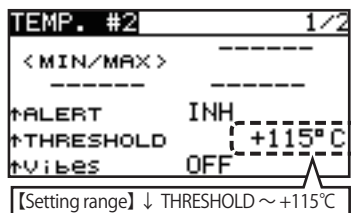
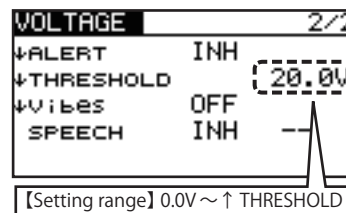
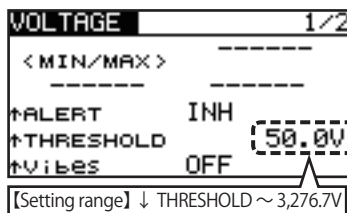
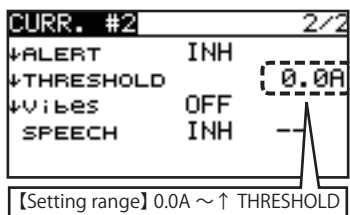
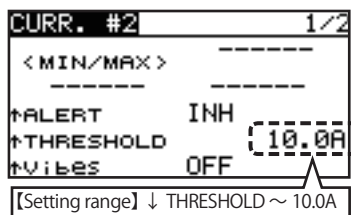
[Setting range] ↓ THRESHOLD ~ +115°C

TEMP. #1	2/2
↓ALERT	INH
↓THRESHOLD	-10°C
↓Vibes	OFF
SPEECH	INH

[Setting range] -10°C ~ ↑ THRESHOLD



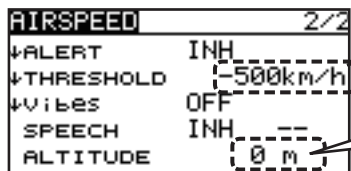
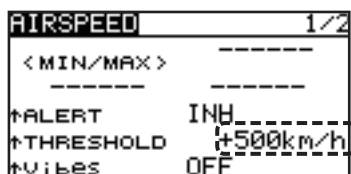
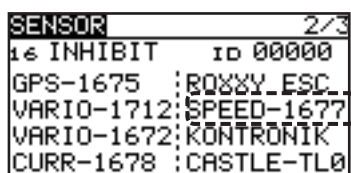
The CASTLE-TLO is selectable.



## 6. [All Model Types] Robbe Air speed sensor function

Compatible with the Robbe True Airspeed Sensor 450. The air speed and altitude can be displayed. Please read the sensor's instruction manual for more information.

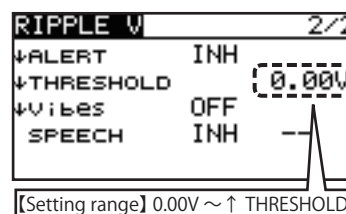
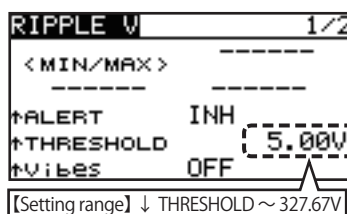
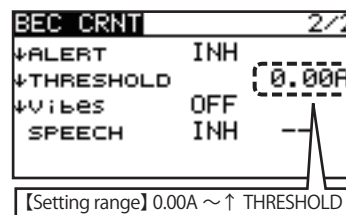
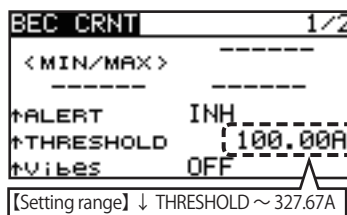
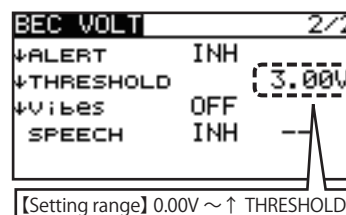
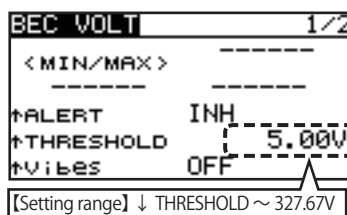
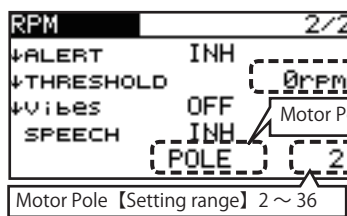
Start Slot	1,2,3,4,5,6,7,8,9,10,11,12,13,14,15,16,17,18,19,20,21,22,23,24,25,26,27,28,29,30,31
------------	-------------------------------------------------------------------------------------

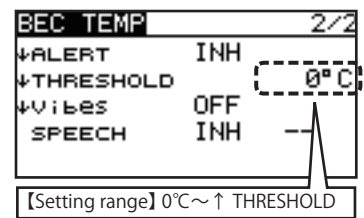
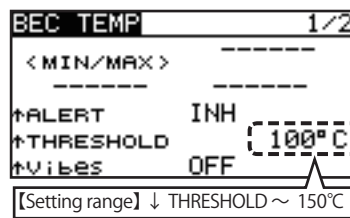
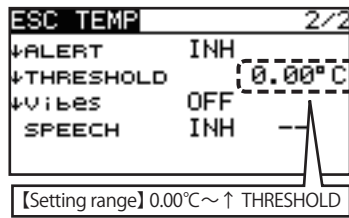
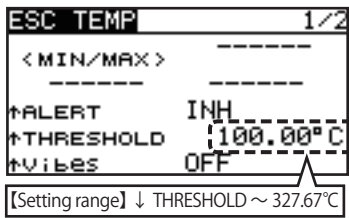


## 7. [All Model Types] Castle ESC sensor function

Compatible with the Castle ESC sensor. The voltage, current, motor duty, RPM, BEC voltage, BEC current and ESC temperature can be displayed. This sensor uses 8 slots. Please read the sensor's instruction manual for more information.

Start Slot	8,16,24
------------	---------

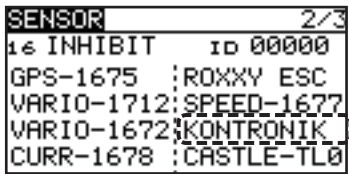




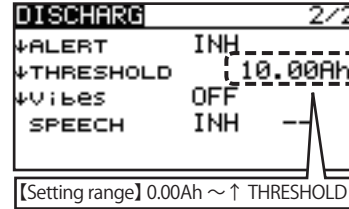
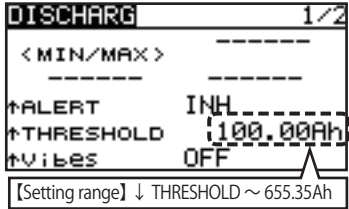
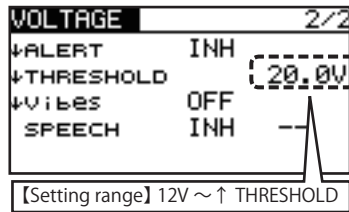
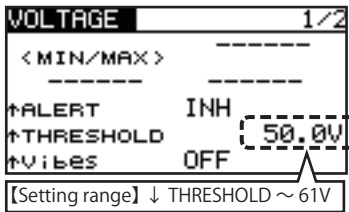
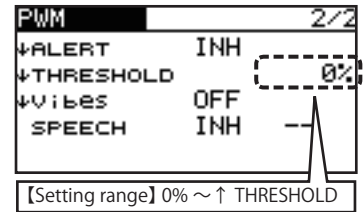
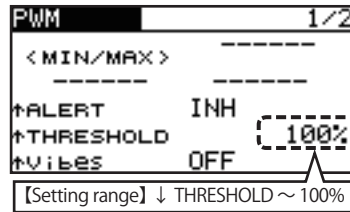
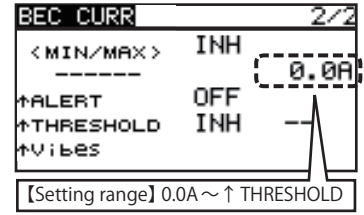
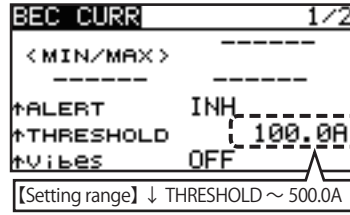
### 8. [All Model Types] KONTRONIK ESC sensor function

Compatible with the KONTRONIK ESC sensor. The current, voltage, capacity, RPM, temperature, BEC temperature, BEC current and motor duty can be displayed. This sensor uses 8 slots. Please read the sensor's instruction manual for more information.

Start Slot	8,16,24
------------	---------



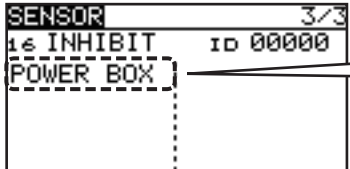
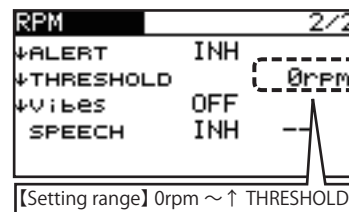
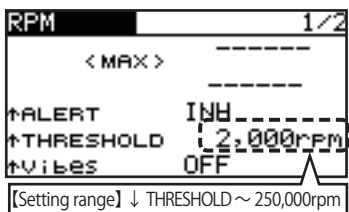
The KONTRONIK is selectable.



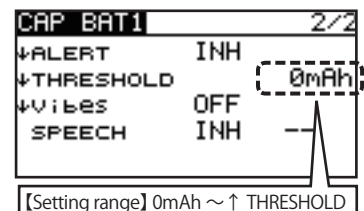
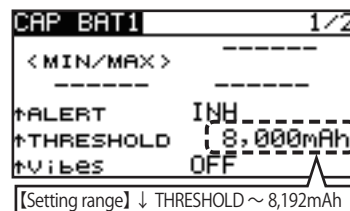
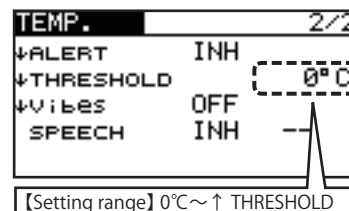
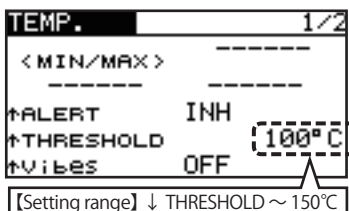
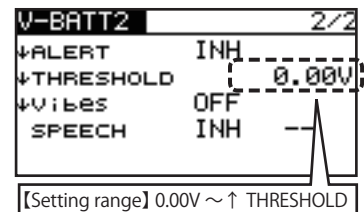
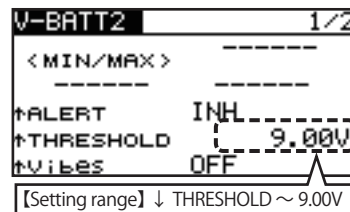
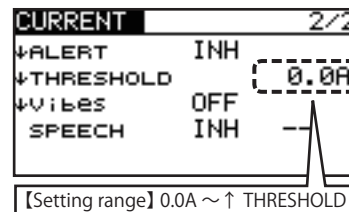
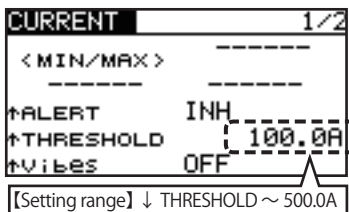
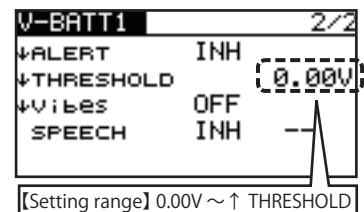
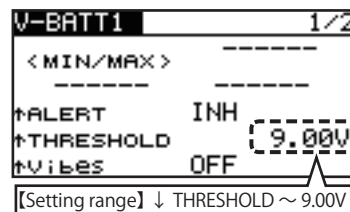
### 9. [All Model Types] PowerBox sensor function

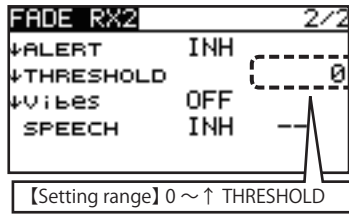
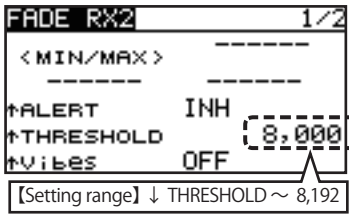
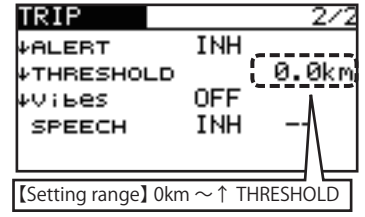
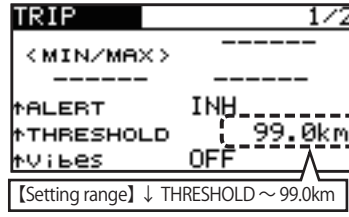
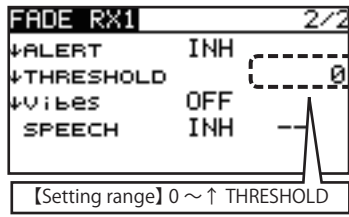
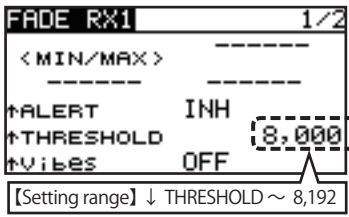
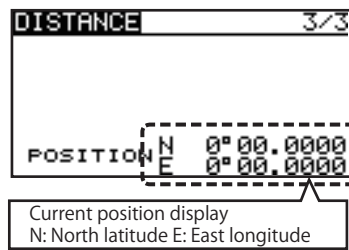
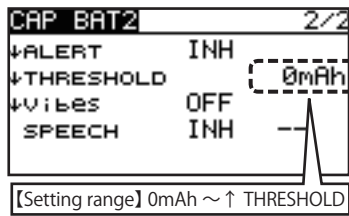
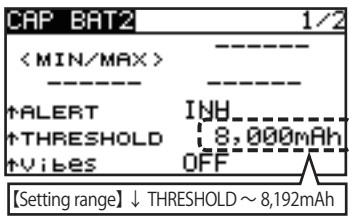
Compatible with the PowerBox sensor. The current, voltage (2 batteries), capacity, reception, speed, altitude, distance and trip can be displayed. This sensor uses 16 slots. Please read the PowerBox sensor instruction manual for more information.

Start Slot	8,16
------------	------



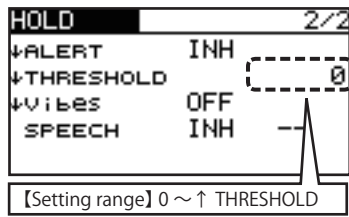
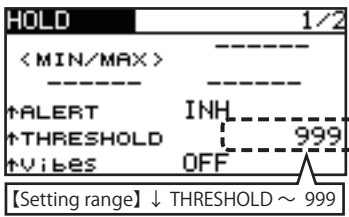
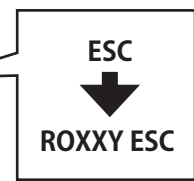
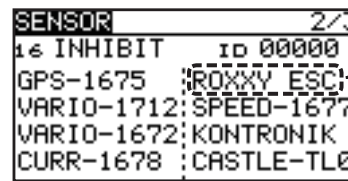
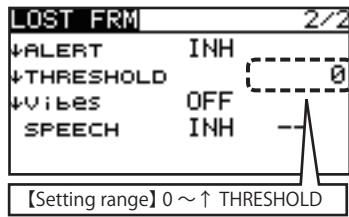
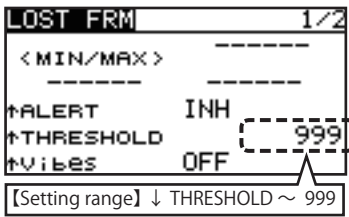
The POWERBOX is selectable.





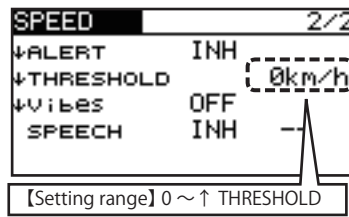
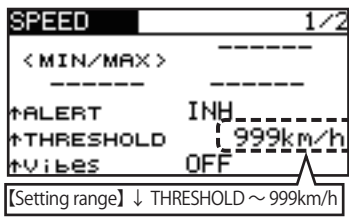
### 10. [All Model Types] Change of the name Robbe ESC

A display name of Robbe ESC changed. There is no change in the function.



### 11. [All Model Types] Change of the DG1/DG2

"Logic switch setting" is added to DG1/DG2. Even 3 logic switches can be used. From the condition switch and DG1/DG2.



### 12. [All Model Types] Change of the trim step

Trim step range changed.  
1 ~ 200 → 0 ~ 200

